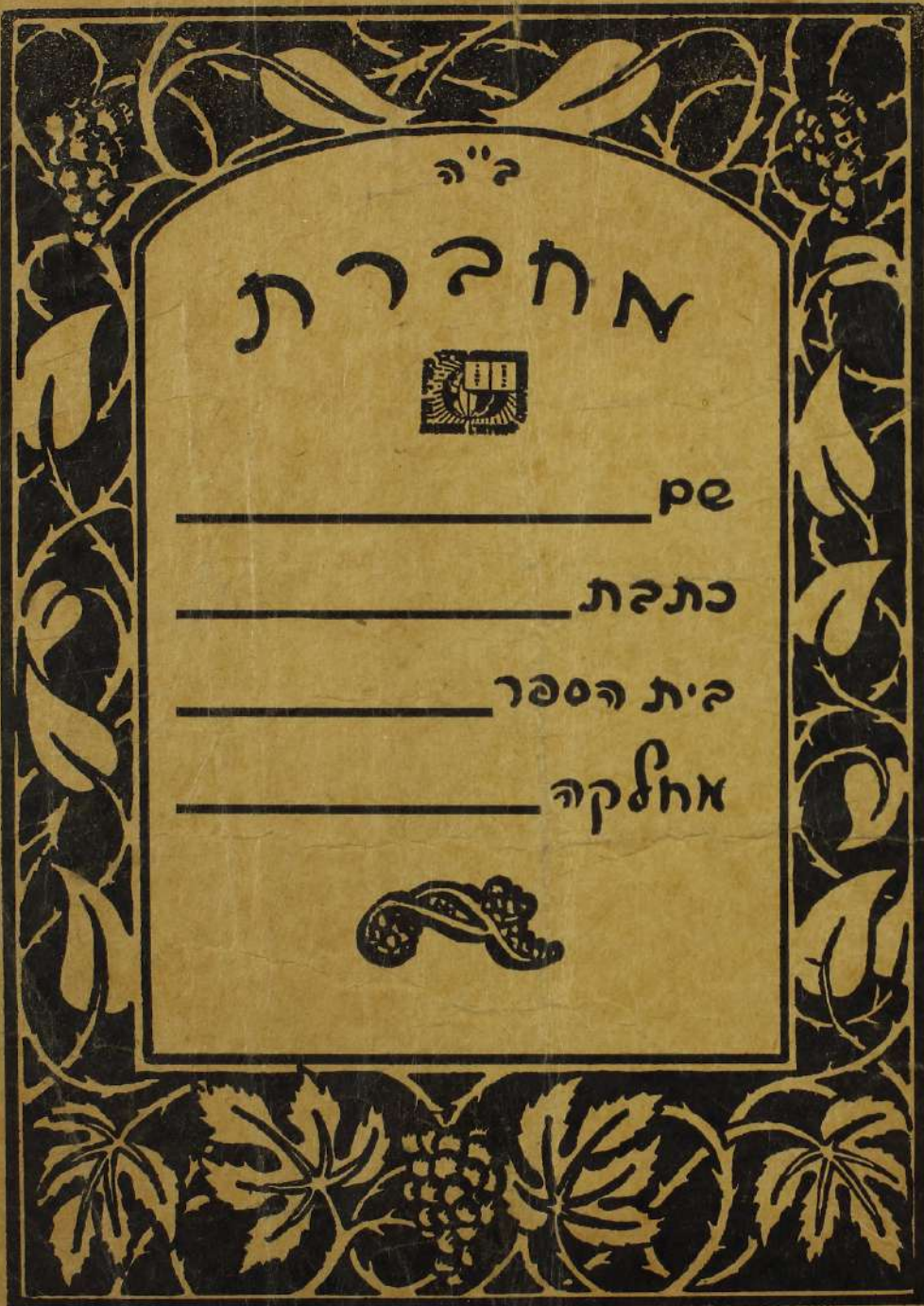


15



ק"ה

# מחברת



\_\_\_\_\_ פה

\_\_\_\_\_ כתבת

\_\_\_\_\_ בית הספר

\_\_\_\_\_ אחזקה













$n=3, \frac{1}{13} \text{ bit}$   
 $n=4, \frac{5}{17} \text{ bit}$   
 $n=5, \frac{6}{17} \text{ bit}$

|       |                 |               |
|-------|-----------------|---------------|
| $n=1$ | $\frac{3}{5}$   | $\frac{2}{3}$ |
| $n=2$ | $\frac{6}{9}$   | $\frac{3}{4}$ |
| $n=3$ | $\frac{9}{13}$  | $\frac{4}{5}$ |
| $n=4$ | $\frac{12}{17}$ | $\frac{5}{6}$ |

$n=2, \frac{5}{9} - \frac{2}{3} = \frac{5-6}{9} = -\frac{1}{9}$   
 $n=3, \frac{5}{9} - \frac{6}{9} = -\frac{1}{9}$   
 $n=4, \frac{5}{9} - \frac{11}{9} = -\frac{6}{9} = -\frac{2}{3}$   
 $n=5, \frac{5}{9} - \frac{15}{9} = -\frac{10}{9}$   
 $n=6, \frac{5}{9} - \frac{17}{9} = -\frac{12}{9} = -\frac{4}{3}$

$n=3, \frac{1}{13} \text{ bit}$   
 $n=4, \frac{5}{17} \text{ bit}$   
 $n=5, \frac{6}{17} \text{ bit}$

$n=3, \frac{1}{13} \text{ bit}$   
 $n=4, \frac{5}{17} \text{ bit}$   
 $n=5, \frac{6}{17} \text{ bit}$

Handwritten notes in Hebrew, including mathematical expressions and calculations.











Handwritten text in a cursive script, likely a manuscript or ledger. The text is densely packed and covers most of the page. It appears to be a list or account of items, possibly related to a business or administrative record. The script is highly stylized and difficult to decipher without specialized knowledge of the language and script.

Handwritten text in a cursive script, continuing from the top page. The text is densely packed and covers most of the page. It appears to be a list or account of items, possibly related to a business or administrative record. The script is highly stylized and difficult to decipher without specialized knowledge of the language and script.

Handwritten text in a cursive script, likely a manuscript or ledger. The text is densely packed and covers most of the page. It appears to be a list or account of items, possibly related to a business or administrative record. The script is highly stylized and difficult to decipher without specialized knowledge of the language and script.

Handwritten text in a cursive script, continuing from the top page. The text is densely packed and covers most of the page. It appears to be a list or account of items, possibly related to a business or administrative record. The script is highly stylized and difficult to decipher without specialized knowledge of the language and script.

Handwritten text in a cursive script, continuing from the top page. The text is densely packed and covers most of the page. It appears to be a list or account of items, possibly related to a business or administrative record. The script is highly stylized and difficult to decipher without specialized knowledge of the language and script.



Handwritten text in Hebrew script, likely a manuscript or ledger. The text is dense and covers most of the page. It includes various entries, possibly names and numbers, written in a cursive style. Some words are underlined or written in larger letters. The text is arranged in several columns and rows, with some lines starting with a vertical line on the left side. There are some numbers and fractions interspersed throughout the text, such as  $\frac{1}{2}$ ,  $\frac{3}{4}$ , and  $\frac{1}{10}$ . The overall appearance is that of a historical document or a collection of notes.

Handwritten text in Hebrew script, likely a manuscript or ledger. The text is dense and covers most of the page. It includes various entries, possibly names and numbers, written in a cursive style. Some words are underlined or written in larger letters. The text is arranged in several columns and rows, with some lines starting with a vertical line on the left side. There are some numbers and fractions interspersed throughout the text, such as  $\frac{1}{2}$ ,  $\frac{3}{4}$ , and  $\frac{1}{10}$ . The overall appearance is that of a historical document or a collection of notes.

Handwritten notes at the bottom right of the page, possibly a summary or a separate entry. It includes some numbers and text, such as "1780-1784" and "1780-1784".











Handwritten text in Hebrew script, likely a manuscript or ledger. The text is dense and covers most of the page. It includes various lines of text, some with numbers and symbols, possibly representing calculations or entries in a record. The handwriting is cursive and characteristic of historical Hebrew documents.

Handwritten text in Hebrew script, likely a manuscript or ledger. The text is dense and covers most of the page. It includes various lines of text, some with numbers and symbols, possibly representing calculations or entries in a record. The handwriting is cursive and characteristic of historical Hebrew documents.



Handwritten text at the top of the left page, including a header with the number 11 and various lines of script.

Main body of handwritten text on the left page, consisting of multiple lines of dense script.

Handwritten text at the top of the right page, including a header with the number 583 and various lines of script.

Main body of handwritten text on the right page, consisting of multiple lines of dense script.



Handwritten text in Hebrew script, likely a manuscript or ledger. The text is dense and covers most of the page. It includes various numbers and words, possibly representing a list or account. The handwriting is cursive and somewhat difficult to read in some places. There are some larger numbers and words that stand out, such as "10/10" and "10/3".

Handwritten text in Hebrew script, likely a manuscript or ledger. The text is dense and covers most of the page. It includes various numbers and words, possibly representing a list or account. The handwriting is cursive and somewhat difficult to read in some places. There are some larger numbers and words that stand out, such as "10/10" and "10/3".



Handwritten text in Hebrew script, likely a list or account. Includes numbers and names.

Handwritten text in Hebrew script, possibly a summary or conclusion. Includes numbers and names.

Handwritten text in Hebrew script, continuing the list or account. Includes numbers and names.

Handwritten text in Hebrew script, continuing the list or account. Includes numbers and names.

Handwritten text in Hebrew script, continuing the list or account. Includes numbers and names.







Handwritten text in Hebrew script, densely packed with mathematical calculations and notes. Includes various fractions and numbers.

10/12 = 5/6  
1/2 = 3/6  
1/3 = 2/6  
1/4 = 1.5/6  
1/5 = 1.2/6  
1/6 = 1/6  
1/7 = 0.857/7  
1/8 = 0.125/8  
1/9 = 0.111/9  
1/10 = 0.1/10  
1/11 = 0.0909/11  
1/12 = 0.0833/12  
1/13 = 0.0769/13  
1/14 = 0.0714/14  
1/15 = 0.0667/15  
1/16 = 0.0625/16  
1/17 = 0.0588/17  
1/18 = 0.0556/18  
1/19 = 0.0526/19  
1/20 = 0.05/20  
1/21 = 0.0476/21  
1/22 = 0.0455/22  
1/23 = 0.0435/23  
1/24 = 0.0417/24  
1/25 = 0.04/25  
1/26 = 0.0385/26  
1/27 = 0.037/27  
1/28 = 0.0357/28  
1/29 = 0.0345/29  
1/30 = 0.0333/30  
1/31 = 0.0323/31  
1/32 = 0.0312/32  
1/33 = 0.0303/33  
1/34 = 0.0294/34  
1/35 = 0.0286/35  
1/36 = 0.0278/36  
1/37 = 0.0271/37  
1/38 = 0.0263/38  
1/39 = 0.0256/39  
1/40 = 0.025/40  
1/41 = 0.0244/41  
1/42 = 0.0238/42  
1/43 = 0.0233/43  
1/44 = 0.0227/44  
1/45 = 0.0222/45  
1/46 = 0.0217/46  
1/47 = 0.0213/47  
1/48 = 0.0208/48  
1/49 = 0.0204/49  
1/50 = 0.02/50  
1/51 = 0.0196/51  
1/52 = 0.0192/52  
1/53 = 0.0189/53  
1/54 = 0.0185/54  
1/55 = 0.0182/55  
1/56 = 0.0179/56  
1/57 = 0.0175/57  
1/58 = 0.0172/58  
1/59 = 0.0169/59  
1/60 = 0.0167/60  
1/61 = 0.0164/61  
1/62 = 0.0161/62  
1/63 = 0.0159/63  
1/64 = 0.0156/64  
1/65 = 0.0154/65  
1/66 = 0.0152/66  
1/67 = 0.0149/67  
1/68 = 0.0147/68  
1/69 = 0.0145/69  
1/70 = 0.0143/70  
1/71 = 0.0141/71  
1/72 = 0.0139/72  
1/73 = 0.0137/73  
1/74 = 0.0135/74  
1/75 = 0.0133/75  
1/76 = 0.0131/76  
1/77 = 0.0129/77  
1/78 = 0.0128/78  
1/79 = 0.0126/79  
1/80 = 0.0125/80  
1/81 = 0.0123/81  
1/82 = 0.0122/82  
1/83 = 0.0121/83  
1/84 = 0.0119/84  
1/85 = 0.0118/85  
1/86 = 0.0117/86  
1/87 = 0.0116/87  
1/88 = 0.0115/88  
1/89 = 0.0114/89  
1/90 = 0.0113/90  
1/91 = 0.0112/91  
1/92 = 0.0111/92  
1/93 = 0.011/93  
1/94 = 0.0109/94  
1/95 = 0.0108/95  
1/96 = 0.0107/96  
1/97 = 0.0106/97  
1/98 = 0.0105/98  
1/99 = 0.0104/99  
1/100 = 0.0104/100

Handwritten text in Hebrew script, densely packed with mathematical calculations and notes. Includes various fractions and numbers.

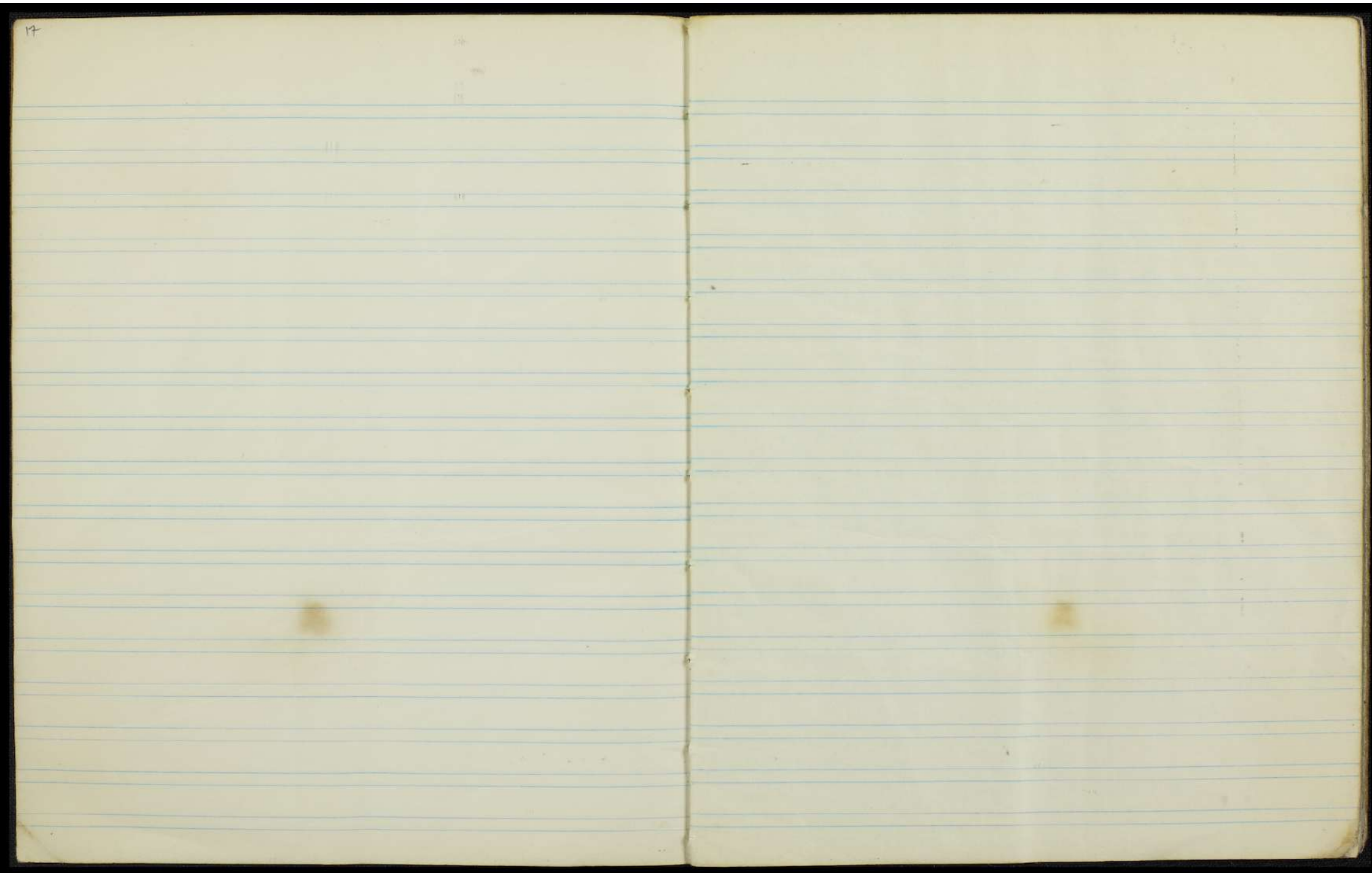
10/12 = 5/6  
1/2 = 3/6  
1/3 = 2/6  
1/4 = 1.5/6  
1/5 = 1.2/6  
1/6 = 1/6  
1/7 = 0.857/7  
1/8 = 0.125/8  
1/9 = 0.111/9  
1/10 = 0.1/10  
1/11 = 0.0909/11  
1/12 = 0.0833/12  
1/13 = 0.0769/13  
1/14 = 0.0714/14  
1/15 = 0.0667/15  
1/16 = 0.0625/16  
1/17 = 0.0588/17  
1/18 = 0.0556/18  
1/19 = 0.0526/19  
1/20 = 0.05/20  
1/21 = 0.0476/21  
1/22 = 0.0455/22  
1/23 = 0.0435/23  
1/24 = 0.0417/24  
1/25 = 0.04/25  
1/26 = 0.0385/26  
1/27 = 0.037/27  
1/28 = 0.0357/28  
1/29 = 0.0345/29  
1/30 = 0.0333/30  
1/31 = 0.0323/31  
1/32 = 0.0312/32  
1/33 = 0.0303/33  
1/34 = 0.0294/34  
1/35 = 0.0286/35  
1/36 = 0.0278/36  
1/37 = 0.0271/37  
1/38 = 0.0263/38  
1/39 = 0.0256/39  
1/40 = 0.025/40  
1/41 = 0.0244/41  
1/42 = 0.0238/42  
1/43 = 0.0233/43  
1/44 = 0.0227/44  
1/45 = 0.0222/45  
1/46 = 0.0217/46  
1/47 = 0.0213/47  
1/48 = 0.0208/48  
1/49 = 0.0204/49  
1/50 = 0.02/50  
1/51 = 0.0196/51  
1/52 = 0.0192/52  
1/53 = 0.0189/53  
1/54 = 0.0185/54  
1/55 = 0.0182/55  
1/56 = 0.0179/56  
1/57 = 0.0175/57  
1/58 = 0.0172/58  
1/59 = 0.0169/59  
1/60 = 0.0167/60  
1/61 = 0.0164/61  
1/62 = 0.0161/62  
1/63 = 0.0159/63  
1/64 = 0.0156/64  
1/65 = 0.0154/65  
1/66 = 0.0152/66  
1/67 = 0.0149/67  
1/68 = 0.0147/68  
1/69 = 0.0145/69  
1/70 = 0.0143/70  
1/71 = 0.0141/71  
1/72 = 0.0139/72  
1/73 = 0.0137/73  
1/74 = 0.0135/74  
1/75 = 0.0133/75  
1/76 = 0.0131/76  
1/77 = 0.0129/77  
1/78 = 0.0128/78  
1/79 = 0.0126/79  
1/80 = 0.0125/80  
1/81 = 0.0123/81  
1/82 = 0.0122/82  
1/83 = 0.0121/83  
1/84 = 0.0119/84  
1/85 = 0.0118/85  
1/86 = 0.0117/86  
1/87 = 0.0116/87  
1/88 = 0.0115/88  
1/89 = 0.0114/89  
1/90 = 0.0113/90  
1/91 = 0.0112/91  
1/92 = 0.0111/92  
1/93 = 0.011/93  
1/94 = 0.0109/94  
1/95 = 0.0108/95  
1/96 = 0.0107/96  
1/97 = 0.0106/97  
1/98 = 0.0105/98  
1/99 = 0.0104/99  
1/100 = 0.0104/100



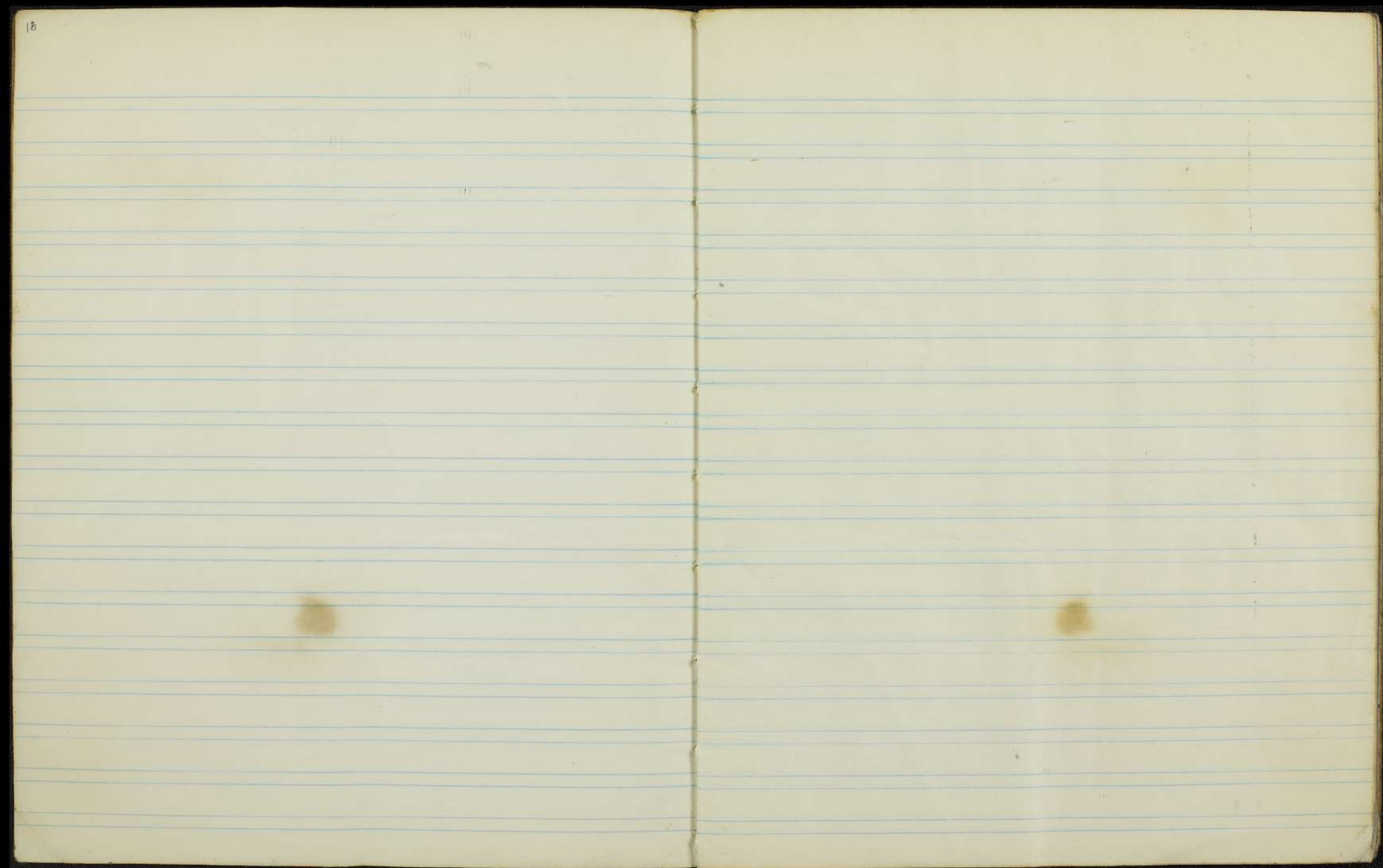
[Faint, illegible handwriting on the left page]

[Faint, illegible handwriting on the right page]

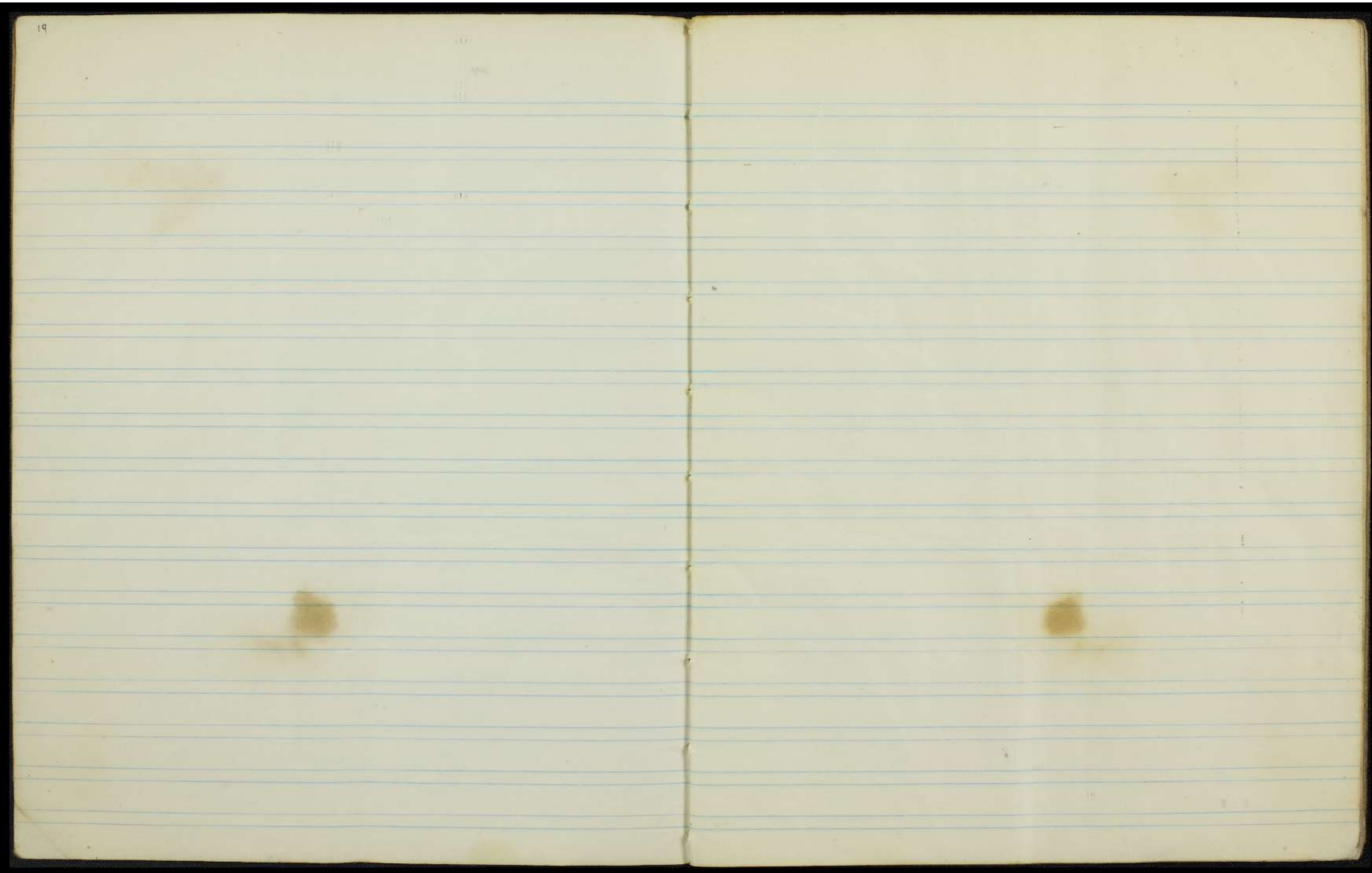














[Faint, illegible handwriting on a lined page]

[Faint, illegible handwriting on a lined page]











ARC. 4\* 2076:01:24

מר שושני

מחברת 51

מספרה הלאומית  
S ARC. 4\* 2076 01 24 מר שושני  
.51 מחברת  
39-11-03-01  
AC-8143  
ARC2  NLI61695 DAV



Handwritten mathematical notes in Hebrew, featuring various calculations and fractions. The text is densely packed and includes several lines of equations and numerical results.

Handwritten mathematical notes in Hebrew, continuing the calculations and providing further explanations or results. The script is consistent with the left page.

